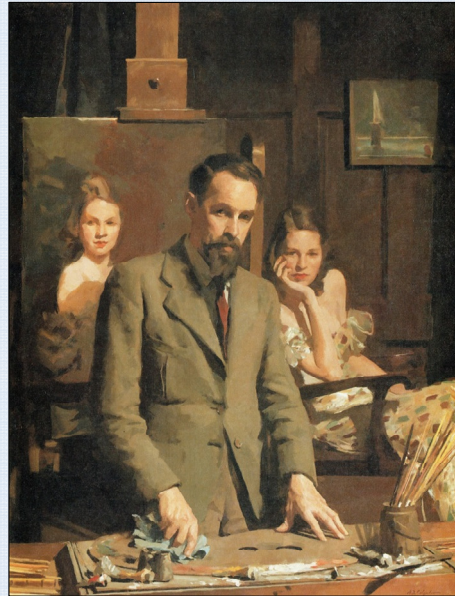
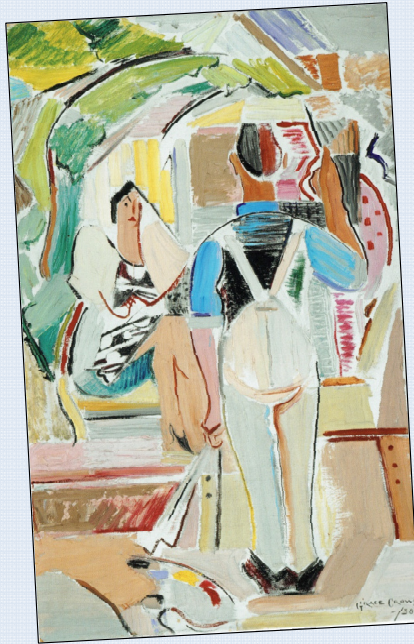


Rebels and Reactionaries



An introduction to the cultural scene in 1930s Australia. Particular attention is paid to the search for National self definition through literature and the visual arts and the conflicting visions of poets, painters and critics. The challenge of international modernism, the increasing political conscience of artists and the influence of European emigres are considered, together with relevant social issues and political events. The lives and work of artists and writers based in both Sydney and Melbourne are discussed.

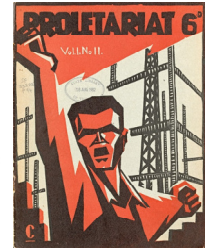
Noel Counihan
1913 - 1986



The Demonstration 1932



The Tycoon 1931



SAMPLE SLIDES



Grace Crowley
Pioneering
Modernist
& influential
teacher

G. Crowley
Sailors & Models 1928



Grace Crowley
1890 - 1979



120 Slides

3 x 90 Minute sessions