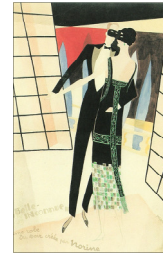




Rene Magritte
1898-1967

Survey of the life, work and achievement of the Belgian surrealist, Rene Magritte. Describes his early investigations into modernism and the turning point that came in 1925. Magritte's involvement with other Surrealists and their shared common ground is considered, but the main focus is on Magritte's unique imagery and his evocative, self contained, self referential art. Many examples of the artist's poetic narratives are analysed and Magritte's writings on art and perception are discussed.



Early artistic endeavours



SAMPLE SLIDES

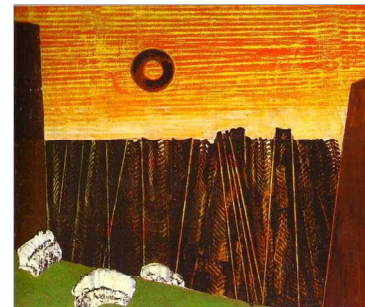


John Paulhan

Contrasting approaches to Surrealism

Terrorists

Rhetorics



Ernst *Fishbone Forest* 1927



Magritte *Signs of Evening* 1926