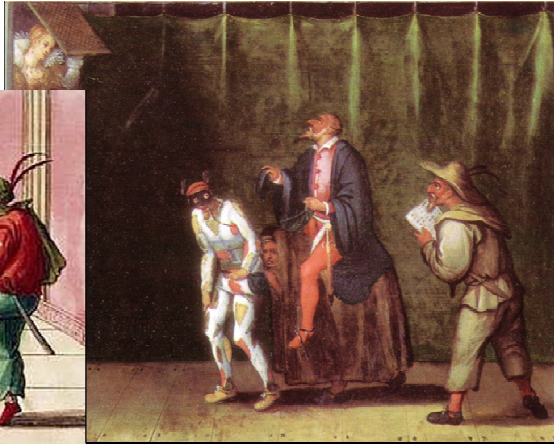




Commedia dell'Arte



An introduction to the Western tradition of comic theatre. Traces its evolution from the bawdy satires of Aristophanes and the domesticated comedies of Plautus through the *beffa* and “learned comedies” of the Italian Renaissance to the formalized *Commedia dell'Arte* productions of Goldoni. Looks closely at the nature of the *Commedia*, its characters and associated performance practices. Productions of *A Servant of Two Masters* are used as points of reference.



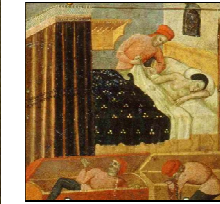
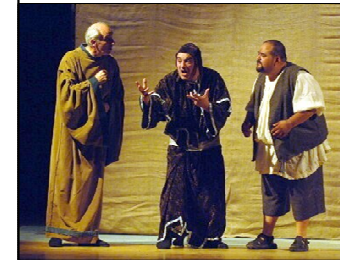
Decameron



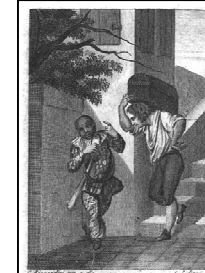
Giovanni Boccaccio



La beffa
(A clever practical joke)



SAMPLE SLIDES



60 Slides & Video 1-2 x 75 Minute sessions